

Tutorial (Intermediate level): Spherical panoramas generation in Agisoft PhotoScan 1.1

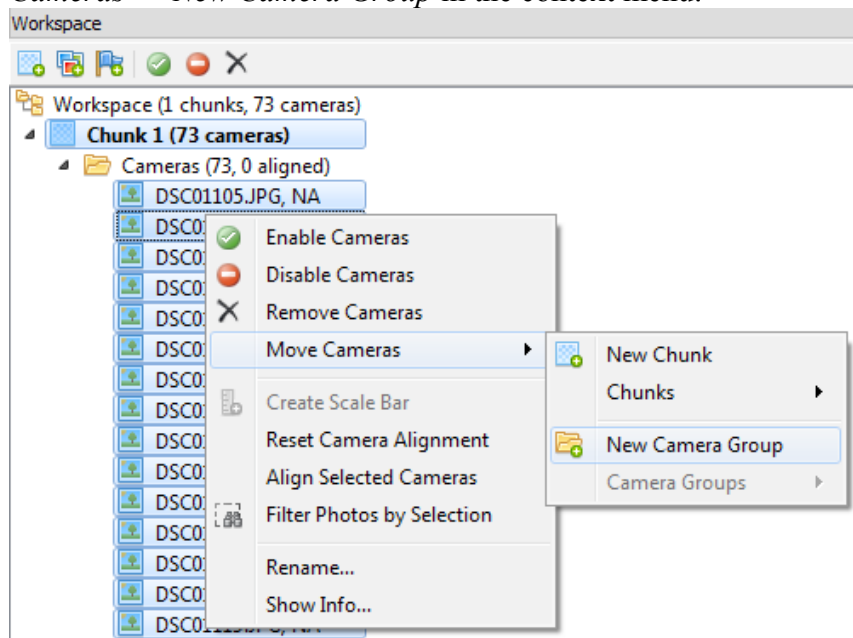
This tutorial shows a way of spherical panoramas generation from multiple images taken from the same camera position (using nodal head for the image acquisition is recommended) using Agisoft PhotoScan.

Load Images

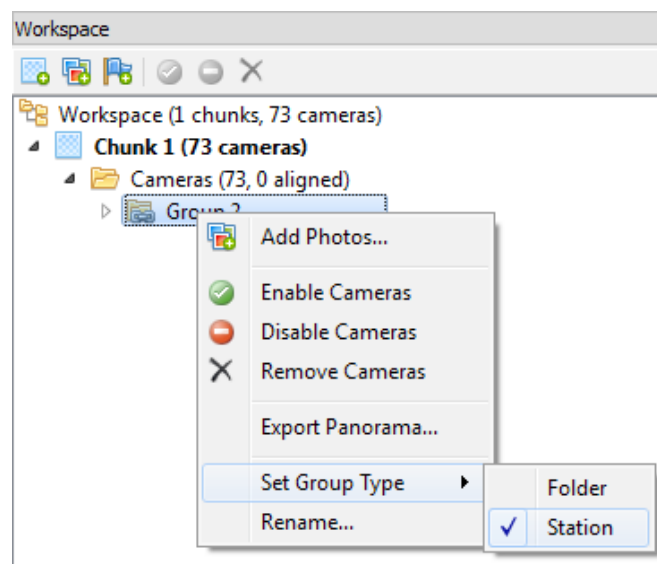
Add images using corresponding button on the *Workspace* pane or using the option in the Workflow menu.

Group Images to Camera Station

Select all cameras in the *Workspace* pane, right-click on the selection and choose *Move Cameras* → *New Camera Group* in the context menu:

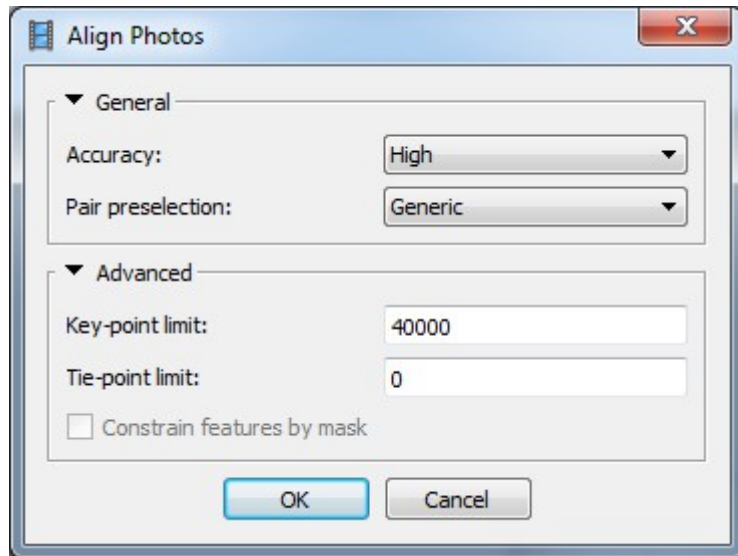


Right-click on the camera group label in the *Workspace* pane and set the group type from *Folder* to *Station*:




Run Align Photos

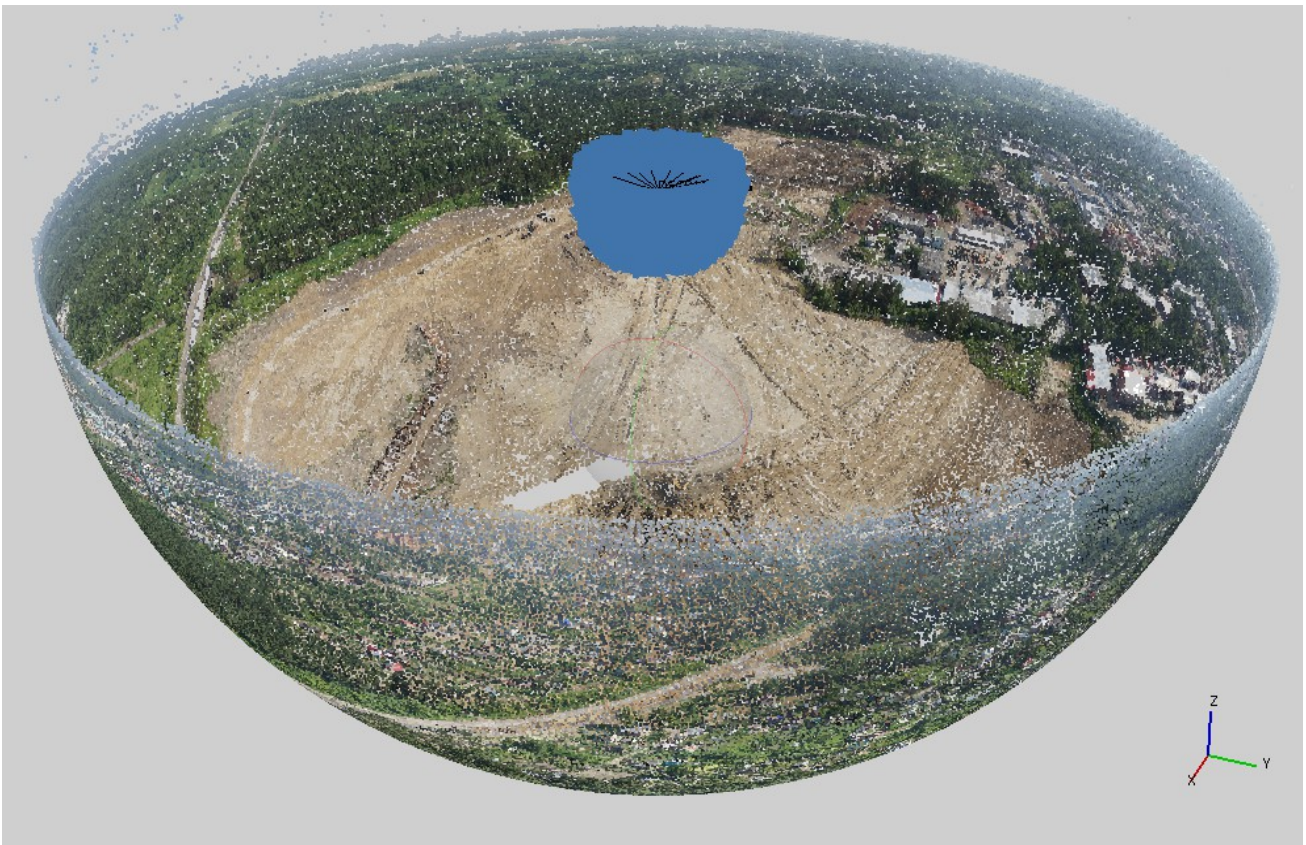
Select *Align Photos* command in the *Workflow* menu:



Click *OK*.

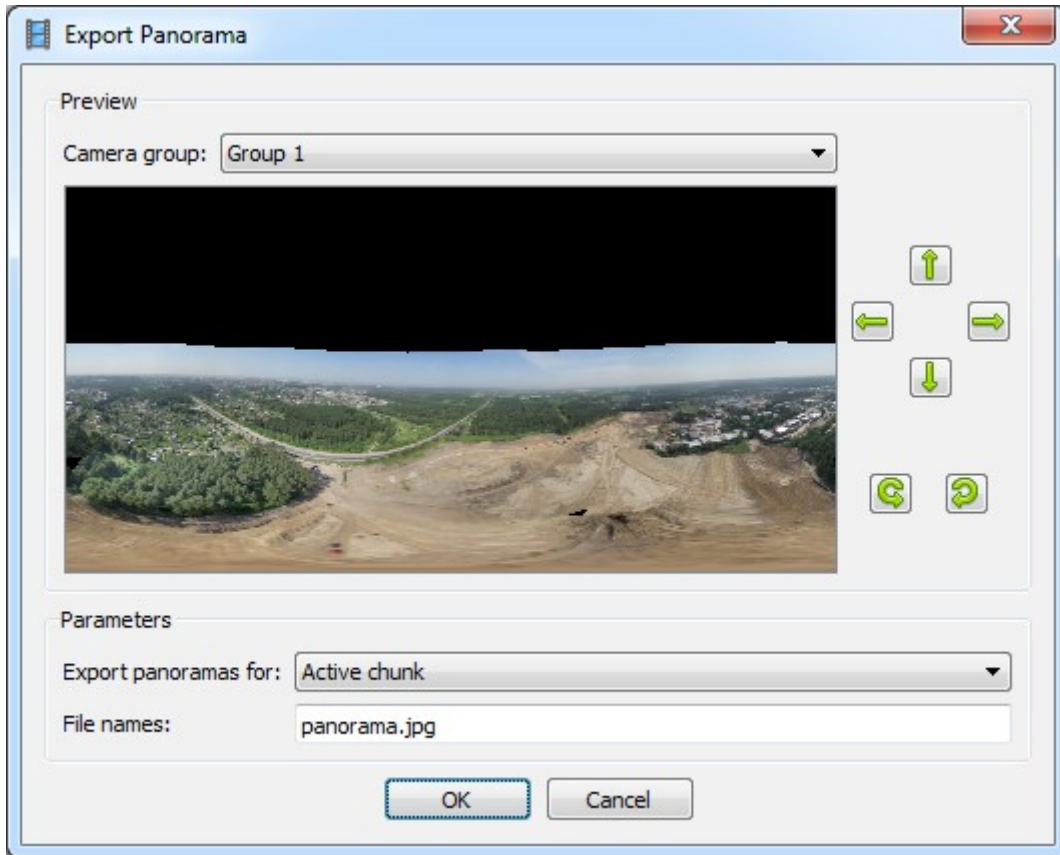
How to Set Up Panorama Orientation

Zoom in to the sparse cloud and apply correct model orientation in space  relative to the coordinate system axis displayed in the bottom-right corner of the Model view using *Rotate Object* tool. Note that one axis should be parallel to the desired horizontal axis on the exported 2D image.



Export Panorama

Select *Export* → *Export Panorama* option in the *Tools* menu → *Export* submenu.



In the *Export Panorama* dialog choose desired orientation and rotation of the output image according to the preview for each camera station group.

Then specify the output file name mask (template could be used for the multiple camera stations).

Click OK.

The resulting image will be of maximal possible resolution according to the input images resolution:

